

## Quick Install Guide



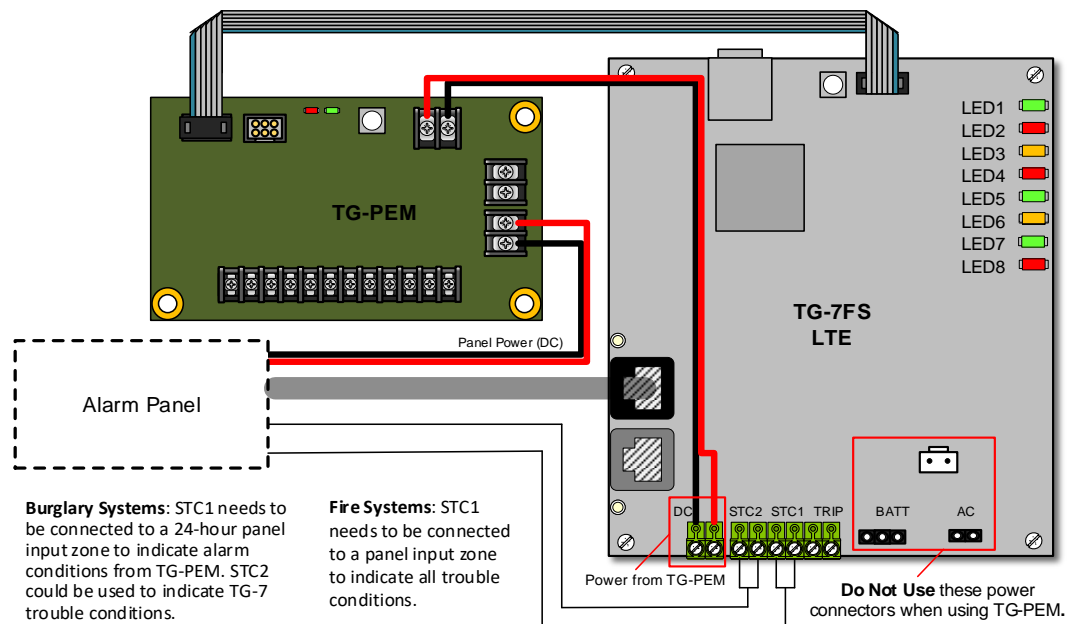
Installing the TG-PEM inside the TG-7 or TG-7FS is simple, but watching our installation video will get you going in no time and insure your installation is quick and easy.

Scan the QR code or visit [telguard.com/pem](http://telguard.com/pem) for the installation video and other useful resources including the full Installation Manual.

### TG-PEM Wiring Diagram

(zone connections not shown)

- The connection from Telguard Power on the TG-PEM to the DC connection on the TG-7 or TG-7FS should be the ONLY power supply connection. The AC power and battery connectors must NOT be used. LED8 (AC Power) should not be lit.
- Supervised zones utilize 2.2kΩ EOL resistors (not provided).



### STEP-BY-STEP:

#### 1. Register the TG-7 or TG-7FS

Use the dealer portal at [www.telguard.com](http://www.telguard.com).

#### 2. Pre-configure the TG-PEM prior to installation

Use the Power Expansion Module tab for the device registered.

#### 3. Mount the TG-7 or TG-7FS

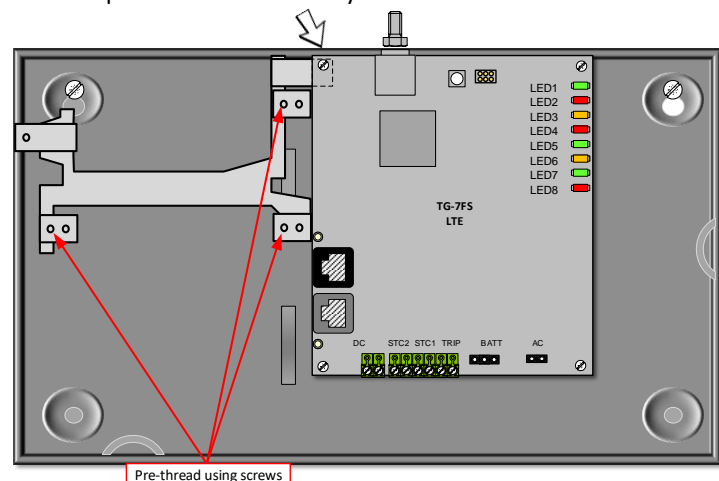
Complete all steps of the physical installation as outlined in the TG-7 series manual. Do not activate yet.

#### 4. Mount the TG-PEM

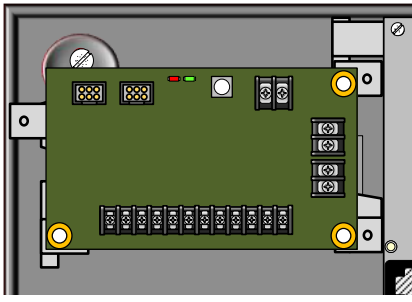
*Tip: To ease mounting of TG-PEM board, pre-thread the metal bracket using the provided mounting screws (marked in red in diagram)*

- Remove top left mounting screw that holds the TG-7 series board (indicated by arrow).
- Orient bracket as shown in diagram.

- Insert bracket at an angle so that top mounting point slides under board as depicted, and angled tab threads through the enclosure bump out.
- Replace screw to securely mount bracket and board.

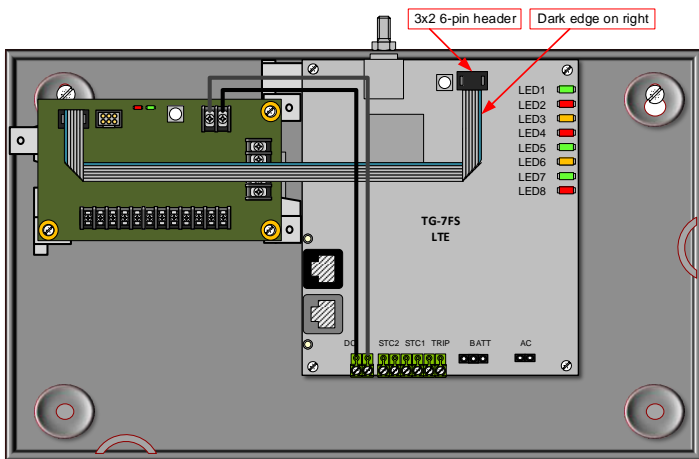


Use the three provided mounting screws to secure the TG-PEM board onto the bracket.



### 5. Connect the TG-PEM to TG-7 or TG-7FS

- Make sure there are no AC or DC power sources connected to the TG-7 or TG-7FS. Connect power and ground from the TG-PEM terminal labeled “TELGUARD POWER” to the terminal block on the TG-7 or TG-7FS labeled DC and GND. **Do not overtighten.**



- Connect ribbon cable (provided) from the connector on TG-PEM labeled “TO HOST” to the 3x2 6-pin header on the TG-7 series board as shown. The dark color edge of

the ribbon cable should be oriented away from the antenna of the TG-7 or TG-7FS.

### 6. Power Up and Configure

- Connect power and ground from the panel auxiliary output to the terminal labeled “PANEL POWER” on the TG-PEM to provide power to the TG-PEM and TG-7 or TG-7FS.
- Complete the activation of the TG-7 or TG-7FS as outlined in the TG-7 series manual.
- If the TG-PEM was preconfigured, it should now be ready; otherwise, visit [www.telguard.com](http://www.telguard.com) to configure the TG-PEM.
- When the TG-PEM is configured and ready, LED D2 will be either solid amber (in power supply only mode) or solid green (in power supply and zone extender mode).

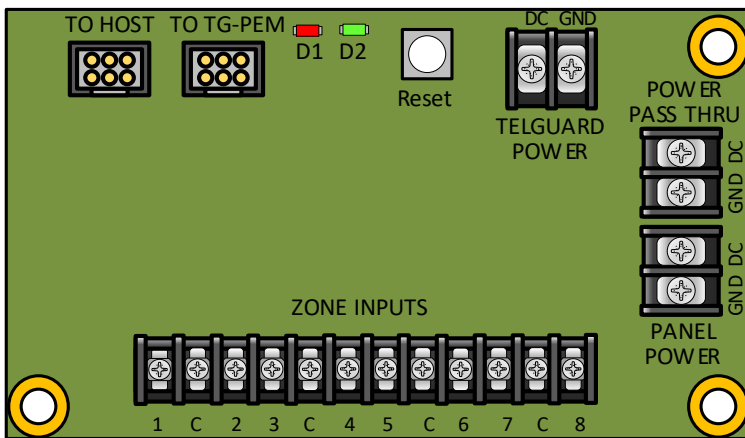
### 7. Connect Zone Inputs (if using)

- Temporarily disconnect the power while you connect any monitoring sensors to the zone inputs.
- For supervised zones, use a standard 2.2kΩ EOL resistor (not included).
- Reconnect power, allow the TG-7 or TG-7FS to initialize, and check for proper operation.

### Optional: Second TG-PEM Installation

See full Installation Manual for mounting and wiring instructions.

### REFERENCE:



Note: At power-up, both LEDs will be on for 3 seconds then off for 3 seconds.

LED D1	LED D2	STATUS	DETAILS
Off	Green	Ready, no activity	TG-PEM is ready
Off	Off	Shut down	Power to TG-PEM is below minimum
Any	Amber flash	Communicator activating	TG is being activated
Red	Green	Reportable event	At least one enabled input is tripped or event(s) captured and waiting to be reported
Red flash	Green	Event reporting	Event(s) reporting or waiting for response
Off	Red flash	Bootloader error	Device failure, contact Technical Support
Off	Amber	Power supply only or Not ready	Power supply mode, TG-PEM waiting for configuration, or Communicator not enabled