



7" All-In-One Touchscreen Panel

PROA7/PROA7PLUS

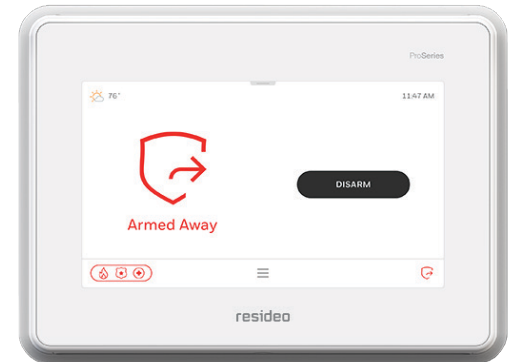
The ProSeries 7" All-in-One Security Panel is a single, self-contained panel that brings together a bright, color-capacitive touchscreen, powerful wireless controller, communicator, microphone, speaker and an 85 dB sounder. Designed for professional installations and upgrades in homes and businesses, the highly scalable All-in-One Security Panel serves as a powerful central hub for commercial and residential security and automation.

ProSeries supports a wide selection of sensors and devices using SiX™ two-way, wireless technology with highly secure AES-128 encryption. SiX devices support over-the-air updates and are locked with the panel, helping to prevent system takeovers. The panel also supports a variety of one-way wireless protocols including legacy 5800, using an optional module. This enables easy and cost-effective system upgrades for your existing install base.

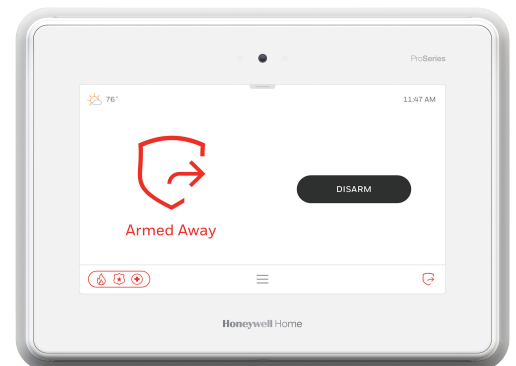
The Pro-Series All-in-One Security Panel integrates with the next generation of Resideo Total Connect®, which delivers a faster, more fluid interaction on mobile devices.

For installation and service efficiency, radios and batteries are end-user replaceable, and the AlarmNet 360™ cloud-based business management tool enables easy remote programming, transmits over-the-air software and firmware updates*, performs remote diagnostics and monitors and provides analytics on system usage and activity.

* Note: OTA firmware updates require Wi-Fi module card and internet/Wi-Fi® connectivity



7" AIO Security Panel:
PROA7



7" AIO Security Panel:
PROA7PLUS

Added features of PROA7PLUS:

The All-in-One Security Panel delivers an outstanding user experience, with a brilliant 7" color touchscreen display, the convenience of Bluetooth hands-free disarming, local voice control. View local video with Total Connect Cameras and Skybell Doorbells and integration with Amazon Alexa. A built-in camera takes a photo of who disarmed the system at the panel, and secondary wireless touchscreen keypads can transmit the photo to an end-user's cell phone.

7" All-In-One Touchscreen Panel Features and Technical Specifications

FEATURES

- **All-In-One**
Self-contained unit combines 7" graphic touchscreen, controller, communicator, microphone, speaker and sounder
- **ProSeries Platform**
Part of a broad and highly versatile security and smart home/business platform with consistent programming, user interfaces and a common range of sensors and peripherals across all solutions. When you learn one, you know them all.
- **SiX Sensors**
Extensive range of secure, encrypted two-way wireless sensors and peripherals with over-the-air upgrade capability
- **Modular Design**
User-replaceable, Z-Wave Plus/Wi-Fi* and cellular radio communications
- **AlarmNet 360™ Online Management Platform**
Remote programming and diagnostics to improve business efficiencies and reduce truck rolls; www.alarmnet360.com
- **Optional Resideo Total Connect Remote Services**
Boost RMR while providing on-the-go security and home control, video viewing, and real-time alerts, anytime, anywhere, on any PC or smart device
- **Anti-Takeover Capability**
SiX sensors can be locked to the panel helping prevent competitive account takeovers and conversions
- **Dual Path Communications**
End-user replaceable LTE communicators and Wi-Fi provide primary and back-up central station communications
- **Smart Home**
Z-Wave Plus compatibility allows control of lighting, locks, thermostats and other devices; system operation can trigger programmed automated scenes that set devices to the end-user's preference
- **Partitions**
Program up to four independent partitions, or 2+/3+ Common Lobby - ideal for commercial customers, small offices, retail shops and multi-dwelling homes
- PLUS models include the optional Wi-Fi/Z-Wave Plus Communication/Automation module standard
- **Programming Options**
ProSeries All-in-One panels can be programmed in the following ways:
Via AlarmNet 360 web portal, AlarmNet 360 Mobile Application or local on-screen programming.

FEATURES OFFERED IN THE PLUS MODEL INCLUDE:

- **Amazon Alexa Built-In**
Supports convenient voice interactivity with Alexa functions and commands
- **Bluetooth® Disarming**
Hands-free auto-disarming with a linked mobile phone in proximity
- **Video Verification Support**
- **Built-In Camera**
Takes photos of user when system is disarmed, at the panel or secondary wireless touchscreen keypads viewable through Total Connect mobile app or event log
- **View Live Video**
View live video from Total Connect indoor and outdoor Cameras as well as Skybell Doorbell cameras on the PROA7PLUS All-In-One panel and corresponding Wireless Touchscreen Keypads



TECHNICAL SPECIFICATIONS

ALL-IN-ONE:

Capacities:

250 Security Zones (includes SiX and One-Way Devices)

127 Max. SiX Two-Way Wireless Devices

78 Z-Wave Plus Devices:

60 Lights, Water Valves, Shades

6 Thermostats

6 Locks

6 Garage Door Controls

8 Wireless Keypads (Touchscreen or LCD)

32 Remote Key Fobs

96 Users

4000 Event Log

DISPLAY:

7" (177.8mm) [diagonal]

LED-backlit capacitive touch display

1024 x 600 pixel resolution, support for millions of colors

USER INTERFACE:

Home Screen: Security Status, Arming Option, Panics, Weather, Time

Idle Screen: Weather, Date, Time, Status, Indoor Temp (if thermostat present)

Quick Pull-down: Voice On/Off, Chime On/Off, Alexa Mute, Brightness, Volume, Clean Screen, Battery Status, Connectivity

Menu Options: Favorites, Devices, Sensors, Smart Scenes, Settings

Trouble Indications: Low Battery, AC Loss, RF Jamming, Sensor/Device Out-of-Range, Communicator Failures, Failure to Communicate, Tamper Conditions, Detector End-of-Life

SIZE AND WEIGHT:

Height: 5.77" (146.6 mm)

Width: 7.90" (200.6 mm)

Depth: 1.06" (26.9 mm)

Weight: 2.10 lbs (0.95 kg)

PARTITIONS:

4 partitions

2 partitions and 1 Common lobby

3 partitions and 1 Common Lobby

7" All-In-One Touchscreen Panel Technical Specifications

ARMING OPTIONS:

Modes: Arm Away, Arm Home, Arm Night, Arm with No Entry Delay (Instant), Quick Arm, Bypass and Arm, Arm with Silent Exit, Force Arm, Auto Arm, Arm with Quick Exit Option

Arm/Disarm via Total Connect

Arm via Triggers (Schedule, Event)

I/O CONNECTORS:

Input and Output:

Speaker

Microphone

Sounder with 85 dB intensity

Built-in camera (PLUS model only)

Connectors and Modules:

Cellular module

(end-user replaceable optional)

Internal backup battery module

(end-user replaceable)

Wi-Fi/Z-Wave Plus module (included with PLUS models)

1-way wireless takeover module (optional)

WIRELESS AND CELLULAR:

Radios/Modules

Max. Plug-in Modules: 3

Cellular: Primary communicator

LTE Verizon: (700, 1700, 1900 MHz)

LTE AT&T: (700, 850, 1700, 1900 MHz),

3G Fallback (850, 1900 MHz)

Carriers: LTE: AT&T®, LTE: Verizon®

Wi-Fi®: Device connectivity, central station communication

Wi-Fi (802.11 b/g/n); (2.4 GHz); 2 x 2 MIMO

Z-Wave Plus: Used for automation

Z-Wave Plus module to support products using the Z-Wave Plus protocol - 500 Series

INCLUDED PROTOCOLS:

BLE-Bluetooth Low Energy:

Bluetooth Disarm via cell phone

RF6-Security Sensors: 2.4 GHz with encryption - 128-bit AES

Antennas: SiX™ Two-Way Wireless Technology antenna to support encrypted two way wireless sensors

Wiselink: Use with MotionViewers® (918 MHz) (PLUS model only)

ZONES/SENSORS/WIRELESS:

Maximum Number of Wireless Keypads:

8 LCD and/or Touchscreen (touchscreen requires Wi-Fi module)

Optional module to takeover 5800, 2GIG,

DSC 433 MHz, ITI/Qolsys and Bosch

(Part Number – PROTAKEOVER)

Max. Two-Way Wireless Indoor/Outdoor

MotionViewers: 8 (PLUS model only)

DEVICES:

78 Z-Wave Plus Devices:

60 Lights, Water Valves, Shades

6 Thermostats

6 Locks

6 Garage Door Controls

USERS:

Installer Code: 1

PIN Length: 4 digits

Credentials: PIN, Bluetooth® Device, Keyfob

SCENES/AUTOMATION:

Max Scenes: 100 (Requires Total Connect)

Types of Trigger: Schedule, Event, Manual

VOICE/CHIME:

Voiced Sensor and System Status Announcements

Up to 10 Selectable Chime Sounds (end-user selectable)

Mute Options

SOUNDER: Max. Intensity: 85 dB

TWO-WAY VOICE:

Required Elements: Supported on Wi-Fi and/or Cellular

PROGRAMMING:

Full Programming via AlarmNet360 Web Interface. AlarmNet 360

Mobile application or local on-screen programming

LANGUAGE SUPPORT:

English, Spanish, Canadian French, Portuguese (Installer selectable)

MOUNTING:

Wall mount back with power connector

Optional: Desk mount kit with plug-in power adapter

TAMPER: Front and back cover tamper protection

POWER:

Plug-in power adapter

Input: 110-240VAC, 50/60 Hz

Output: 9VDC, 2.5A

Back-Up Battery

Lithium-Ion 3.6V, 7500mAh

24 hours of backup power

AGENCY LISTINGS:

ETL listed to UL Std 985, 1023, 1610, 1637, 2017

ETL to ULC Std S545, ULC S304, ULC S304 Level 2

CSA C22.2#205, ANSI/SIA CP-01:2014



Offered with PLUS model:

BLUETOOTH DISARMING:

Max. Bluetooth Device: 6

Enable/Disable via AlarmNet 360™

VOICE/CHIME:

Native Voice Assistant: Amazon Alexa

(Enable/Disable via AlarmNet 360)

VIDEO ALARM VERIFICATION:

Indoor MotionViewer, Total Connect Account

BUILT-IN CAMERA:

Camera Resolution: 2MP Fixed

Photo Resolution: 640 x 480 pixels

Viewing Angle: 68°

Function: Captures two Images when system disarms

View via Total Connect or Event Log

VIEW LIVE VIDEO

View live video from Total Connect indoor and outdoor cameras as well as Skybell Doorbell cameras on the PROA7PLUS All-In-One panel and corresponding Wireless Touchscreen Keypads.

*Requires Wi-Fi module card, internet/Wi-Fi connectivity and Total Connect account package

7" All-In-One Touchscreen Panel

ORDERING

PLUS MODELS INCLUDE:	
PROA7PLUS	7" AIO Security Panel with Wi-Fi/Z-Wave Plus module (included), Honeywell Home branded
PROA7PLUSC	7" AIO Security Panel with Wi-Fi/Z-Wave Plus module (included), Resideo branded
PROA7PLUSCN	7" AIO Security Panel with Wi-Fi/Z-Wave Plus module (included), Honeywell Home branded – Canadian version
MID-TIER MODELS INCLUDE:	
PROA7	7" AIO Security Panel, Honeywell Home branded
PROA7C	7" AIO Security Panel, Resideo branded
PROA7CN	7" AIO Security Panel, Honeywell Home branded – Canadian version
ACCESSORIES/POWER SUPPLIES/BATTERIES	
PROA7DM	Desk Mount Stand for PROA7 and PROA7PLUS models (includes PROA7BARUS barrel jack connector)
PROA7BARXUS	Transformer with Barrel Jack Connector for use with Desk Mount Stand – US version
PROA7BARXCN	Transformer with Barrel Jack Connector for use with Desk Mount Stand – Canadian version
PROA7XFMRUS	Transformer with Terminal Block for PROA7 and PROA7PLUS models
PROA7XFMRCN	Canadian Transformer with Terminal Block for PROA7CN and PROA7PLUSCN models
PROA7BAT2	24-hour battery backup for PROA7 and PROA7PLUS models

For more information

www.resideo.com/pro



Resideo Technologies, Inc.

2 Corporate Center Drive, Suite 100
P.O. Box 9040
Melville, NY 11747
1-800-645-7492
resideo.com

L/PS7AIO2D/D | 06/21

© 2021 Resideo Technologies, Inc. All rights reserved. The Honeywell Home trademark is used under license from Honeywell International Inc. This product is manufactured by Resideo Technologies, Inc. and its affiliates. Amazon, Alexa and all related logos are trademarks of Amazon.com, Inc. or its affiliates.