



Indoor/Outdoor Mini Bullet (ADC-VC726) - Installation Guide

Pre-setup checklist:

- ADC-VC726 camera (included)
- AC power adapter (required for non-PoE connections)
- Broadband (Cable, DSL or Fiber Optic) Internet connection with router
- A computer or mobile device with Internet access
- An Ethernet / Cat5 cable
- Login and Password for the Alarm.com account to which you will add the camera

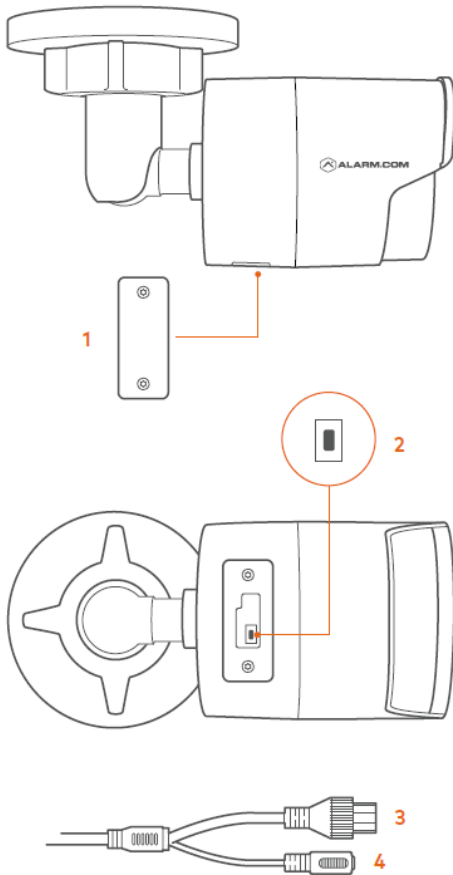
Add the camera to an Alarm.com account

Complete these steps prior to installing the camera in its final location.

1. Connect the camera to the router via an Ethernet cable. For more information about connecting video devices using PoE, see [Connect a video device using Power-Over-Ethernet \(PoE\)](#).
2. If the Ethernet connection does not provide power, connect the camera to the optional AC power adapter (sold separately) and plug the adapter into a non-switched outlet.
3. Wait a few minutes for the camera to connect to the Internet.
4. Add the video device to the account using either MobileTech, or entering the following web address: www.alarm.com/addcamera to access the Customer Website.
5. Follow the on-screen instructions to add and set up the video device. For more information about adding a camera to an account, see [Enroll the video device to the customer account](#).
6. Once the camera is enrolled on the account, power down the camera and install it in its final location using the included hardware.



- 1 Water-Tight Door
- 2 Reset Button
- 3 Ethernet Interface
- 4 AC Power Connector



Troubleshooting

If you have issues connecting the camera to the account, power cycle the camera and try again.

If issues persist, reset the camera to factory defaults by following these steps:


1. Disconnect the camera from the power supply.
2. Use the Hex Key to remove the water-tight door on the bottom of the camera and locate the Reset button.
3. Press and hold the Reset button while reconnecting power. Continue to hold the Reset button for 10 seconds.

Questions?

Visit: www.alarm.com/supportcenter



Additional resources

 Enroll in the [Video as a Service 201](#) training course today! For more information on accessing Academy Training, see [How can I access Academy Training?](#)



https://answers.alarm.com/ADC/Partner/Installation_and_Troubleshooting/Video_Devices/Indoor%2F%2FOutdoor_Mini_Bullet_/

Updated: Wed, 19 Jun 2019 01:30:58 GMT