



## ***Uplink Remote***

## **Remote Installation Guide for Model 2500**

### **Overview**

With today's busy lifestyles, more and more consumers are demanding easy remote access to their security systems. Alarm systems enabled with Uplink Remote and an Uplink cellular communicator allow users to remotely:

- Arm and disarm the alarm system
- View the current arming status
- View alarm event history
- Receive notifications of alarm events

This can all be done from a web browser, a mobile phone browser and an APP on iPhone and Android devices.

The web site at [www.uplinkremote.com](http://www.uplinkremote.com) also allows users to add, manage and delete logins and adjust settings for messaging of event notifications.

### **Alarm System Requirements**

The alarm system must have:

- One momentary or latching key-switch zone
- One programmable output of 12VDC for the system's armed condition
- 12V DC power from the panel, panel's battery or other external power supply.

Other components necessary are:

- Uplink Model 2500 with one available Input and Output
- One Uplink Remote Pulse Board if momentary keyswitch operation is required by the system



### **Installation Summary**

Installation of an Uplink Models 2530 or 2550 for Remote operation is easy. Here is a quick summary of the steps required:

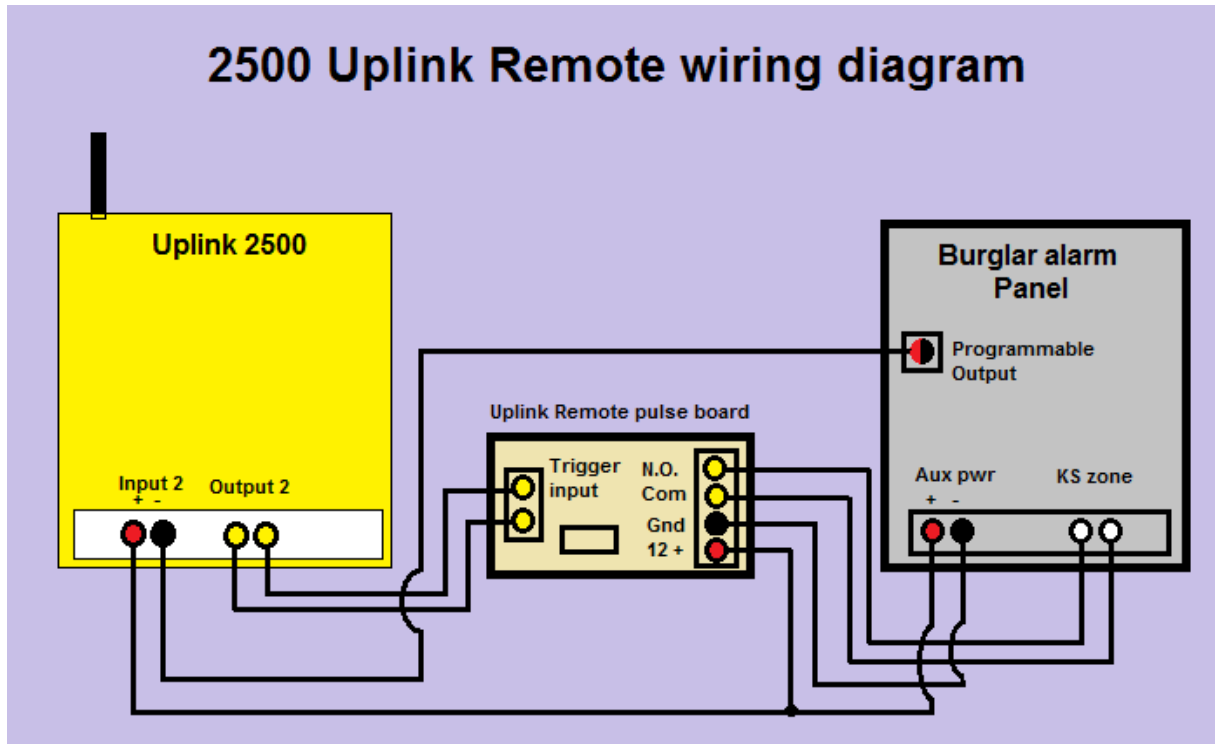
1. Connect wiring for the Key-switch Zone– which arms and disarms the alarm system.
2. Connect wiring for the PGM output– which communicates the armed status to the Uplink radio.
3. Connect the phone wiring between the alarm panel and Uplink communicator.
4. Connect power to the alarm panel and Uplink communicator.
5. Activate the Uplink unit I the Dealer Portal and adjust unit settings.
6. Setup customer information, users and settings in the Uplink Remote website.

See the Installation Instructions in this manual for details.



**Uplink Remote**

## Remote Installation Guide for Model 2500



### Uplink 2500 Remote Pulse Board

The Uplink 2500 Remote Pulse Board allows the Installer to easily wire the connections between the Uplink 2500 and the alarm system that requires a momentary keyswitch input. The Pulse Board sends a momentary relay closure to the alarm system key-switch zone whenever the 2500 output relay opens or closes. Systems with Maintained keyswitch operation do not require the board.

DIP switch SW1 is used to program the momentary output pulse time for the alarm system's key-switch. With all 4 switches set to off, the KS OUT contacts will close for ½ second whenever the 2500 output changes states. Longer key switch times may be selected in 1-second increments by setting single or multiple SW1 switches to ON. Values from 1 second to 15 seconds may be obtained. See Figure 1 and Table 1. Consult your alarm system's installation manual for required pulse times.

**Figure 1 : Uplink 2500 Remote Pulse Board showing SW1 set for 2 Seconds**



## Uplink Remote

## Remote Installation Guide for Model 2500

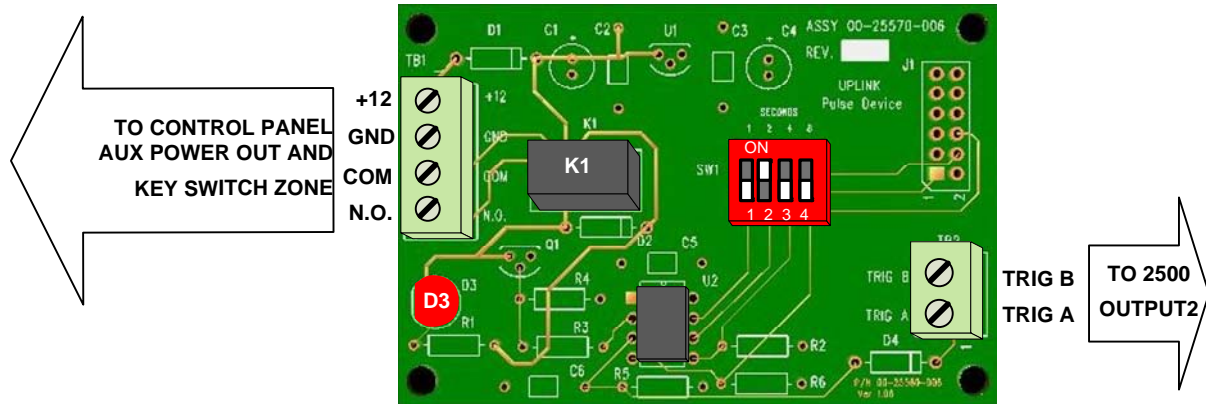


Table 1 : SW1 Time Values

SW1 Settings	Time in Seconds	SW1 Settings	Time in Seconds	SW1 Settings	Time in Seconds	SW1 Settings	Time in Seconds
	½		4		8		12
	1		5		9		13
	2		6		10		14
	3		7		11		15



## ***Uplink Remote***

## **Remote Installation Guide for Model 2500**

### **Installation**

1. Wiring the Keyswitch Zone
  - a. Remove power from the 2500 and the alarm system.
  - b. For Momentary Keyswitch operation: (Common on Vista, Concord, Networx. Selectable on DSC)
    - i. Connect the Uplink Remote Pulse Board +12V terminal to the alarm panel's +12V Aux+ or other terminal.
    - ii. Connect the Uplink Remote Pulse Board GND terminal to the Aux - or ground terminal on the alarm panel.
    - iii. Connect the Uplink Remote Pulse Board COM and N.O. terminals to the control panel's momentary key switch zone terminals. Polarity does not matter. You may wish to place the zone EOL resistor across the COM and N.O. terminals to provide zone supervision.
    - iv. Connect the Uplink Remote Pulse Board TRIG A and TRIG B terminals to the OUTPUT2 + and OUTPUT2 - terminals of the Uplink unit. Polarity does not matter.
  - c. For Latching Keyswitch operation: (Selectable on many DSC)
    - i. The 2500's latching Output 2 may be wired directly to the latching keyswitch zone + and -.
2. Wiring the Armed State connection
  - a. Connect the panel's PGM+ output to the 2500's Input 2 +
  - b. Connect the panel's PGM- (output 17 on Vista) to the 2500's Input 2 -
3. Completing the Installation
  - a. Use the included double-sided tape to mount the Remote Interface Board in a suitable secure location.
  - b. Re-apply power to the alarm system and the 2500. Allow sufficient time for the Uplink 2500 to register.
  - c. Test a User login to the system at [uplinkremote.com](http://uplinkremote.com) and test the operation of the Remote service.

### **Activation and Programming**

1. Activate the Uplink Model 2500 unit by logging into the Uplink Dealer Portal at [Uplink.com](http://Uplink.com).
2. Go to Programming / Activate unit: Enter the Uplink unit serial number.
  - a. Select the appropriate service plan.
  - b. Select the desired Uplink Remote rate plan and then select Update.



## ***Uplink Remote***

## **Remote Installation Guide for Model 2500**

3. Go to Programming / Add/Remove Remote Services
  - a. For alarm systems using a “Pulse” Key-switch Zone:
    - i. Select Pulse Board “Yes”
    - ii. Panel Arm Command (Key switch Zone): Select Output 2 On
    - iii. Panel Disarm Command (Key switch Zone): Select Output 2 Off
  - b. For alarm systems using a “Maintained” or “Latching” Key-switch Zone:
    - i. Select Pulse Board “No”
    - ii. Panel Arm Command (Keyswitch Zone): Select “Open Output” for panels where an open keyswitch zone causes arming. Select Close for panels using a closed zone to arm.
    - iii. Panel Disarm Command (Key-switch Zone): Select “Close Output” or “Open Output” as required by the key-switch zone.
    - iv. Panel Armed Indicator (PGM Output): If the PGM output is High (12V) while Armed, Select Panel Cable Supervision Restoral. If the PGM output is Low or open on Armed, select Panel Cable Supervision Trouble
    - v. Panel Disarmed Indicator (PGM Output): Select the opposite of the above then press “Update”
4. Go to Programming / Add/Remove Remote Services
  - a. Enter Unit information, Input descriptions, Output description
  - b. NOTE: Unit Name and Tracking number are used to populate information for the customer’s interactive profile. These are free-form fields for dealers to populate as needed.
  - c. Enter Notification Path Information
  - d. Enter Notification Control: Notify on Input 2 Alarm? = Yes, Notify on Input 2 Normal = Yes
  - e. Configure other unit settings to your install needs
5. Go to Programming / Program Unit Over-the-Air
  - a. Under Event Reporting, Select “Send Alarms and Restores” and click Send.
6. Create a Customer and enter Uplink Remote Settings
  - a. Go to the website [uplinkremote.com](https://uplinkremote.com):
  - b. Go to the [uplinkremote.com](https://uplinkremote.com):
    - i. Go to Programming / Edit Uplink Remote Profile. Click “Login to Uplink Remote” button.
    - ii. Or, go to [https://www.uplinkremote.com/user/sign\\_in](https://www.uplinkremote.com/user/sign_in) and use your dealer login credentials.
  - c. Create a new Customer



## ***Uplink Remote***

## **Remote Installation Guide for Model 2500**

- d. Select the desired Uplink unit from the pull-down menu, enter information for the Customer and master User, click Add User, follow instructions and “Save”.
- e. Note: the email you enter is the customer’s login for Uplink Remote and is limited to one use.
- f. Select “Program Information” and enter Zone Descriptions and Keypad User names.
- g. Cellular communicator information is populated from the Uplink device activated in Uplink.com. This information must be edited in Uplink.com.

### **Testing Uplink Remote**

1. From Uplink Remote, selecting the Customers tab will list all Uplink Remote Customers.
2. Select View to see the website pages your customer will see and test the operation of the Uplink Remote commands.
  - a. From the Home menu, send an Arm or Disarm command and wait for Uplink Remote to return the new status of the system (this could take 30 seconds or more).
    - i. If both of the arming commands are shaded, arm or disarm the panel from its keypad to synch up the panel’s state to Uplink Remote.
    - ii. If the status is incorrect, invert the armed logic using the settings in the Programming / Edit Uplink Remote Profile menu in Uplink.com
  - b. If the alarm system does not arm or disarm per the command, check your key switch zone programming and/or wiring.
  - c. You may also need to increase the time setting on the Pulse board to meet the requirements set by the manufacturer of the alarm system.
3. Adjust other settings in Uplink Remote or Uplink.com if necessary.
4. Test a User login to the system at [uplinkremote.com](http://uplinkremote.com) and test the operation of the Remote service.

### **Installation Tips**

1. DSC 1616
  - a. Key-switch: In order to configure a keyswitch zone you must program location 001 and go to the segment corresponding with the zone you desire to use. Program Type = 22 for a momentary keyswitch. Program Type = 23 for a maintained keyswitch (Maintained keyswitch does not require the Uplink Remote Pulse Board’s pulse function).
  - b. PGM: To program the PGM output2, program location 009 with a 05 for armed status. Use default attributes.
2. Vista



## Uplink Remote

## Remote Installation Guide for Model 2500

- a. Key-switch: These systems usually require momentary key switch inputs so the Uplink Remote Pulse board must be used. Go to Field \*56 Zone type = 77 (Keypad)
  - b. PGM: To use Vista PGM Output 17:
    - i. Connect Aux + to Board's Arm In+, Output 17 Green to Board's Arm-
    - ii. Field \*79, Output No17, Normally Low = 0 = No
    - iii. Field \*80, Output Function = 01, Activate by Zone Type = 2, Enter Zone Type = 22 (Disarming), Enter Output No. = 17, Output Action = 0 = Off
    - iv. Field \*80, Output Function = 02, Activate by Zone Type = 2, Enter Zone Type = 20 (Arm Away), Enter Output No. = 17, Output Action = 2 = Stay Closed
    - v. Field \*80, Output Function = 03, Activate by Zone Type = 2, Enter Zone Type = 21 (Arm Stay), Enter Output No. = 17, Output Action = 2 = Stay Closed
    - vi. Field \*84, Set to 0.
3. Concord Express
- a. These systems usually require momentary key switch inputs so the Uplink Remote Pulse board pulse feature must be used.
  - b. Key-switch: To assign a Keypad Sensor:
    - i. With the display showing KEYPADSENSOR n (current sensor number), enter the desired sensor number (01-24). The display flashes the entered sensor number.
    - ii. Press *f* and the display will show the new number.
  - c. PGM: To program output#2 for state go to location 09110 segment 01710 program a 009 for arming stay and away.
4. Network
- a. These systems usually require momentary key switch inputs so the Uplink Remote Pulse board pulse feature must be used.
  - b. Key-switch: Program the zone type in location 25 for the desired zone in its segment 1-8 as an 11 Keypad zone
  - c. PGM: Select a PGM location 47 = output 1, 48 = output 2, 49 = output 3, and 50 = output 4. Program a 21 in the first segment and a 0 in the second

NOTE: Zone Doubling is NOT supported by Uplink Remote.