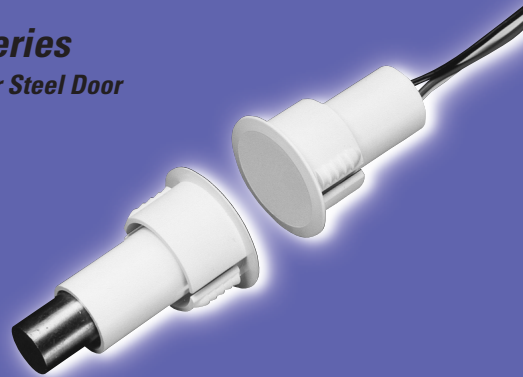




GE Magnetic Contacts

1078C Series

3/4" Diameter Steel Door



Gap Distance		Loop <i>Closed/Open</i>	SPDT
<i>In Steel</i>	<i>In Wood</i>		
<i>Up to 3/8"</i>	<i>7/8"</i>	<i>1078C</i>	<i>1076C</i>
<i>Up to 3/4"</i>	<i>2"</i>	<i>1078CW / 1077CW</i> <i>(no Canadian listing)</i>	<i>1076CW</i>
<i>Up to 3/8"</i>	<i>5/8"</i>		<i>1076CD DPDT</i> <i>(no Canadian listing)</i>

Color	<i>White, Mahogany, Grey</i>
Quantity	<i>10</i>

100% **TESTED**



604S
Connectors and Switches

1078C-M



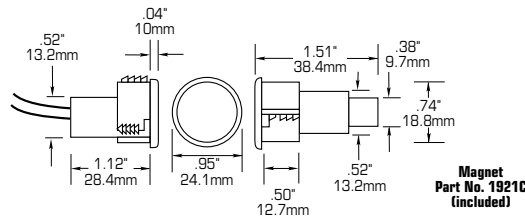
0 46188 01547 2

1078C Series

3/4" Diameter Steel Door with Wire Leads

Installation Instructions

1. Drill appropriate diameter and depth holes for contact and magnet. Hole saw arbors available from GE.
 Holes required except for 1076CD:
 Contact- 3/4" x 1 1/8"
 Magnet- 3/4" x 1 1/2"
 Holes required for 1076CD:
 Contact- 3/4" x 1 1/2"
 Magnet- 3/4" x 1 1/2"
2. Connect contact leads to security system loop and test for continuity.
3. Lightly coat the contact and magnet with RTV mounting compound (part number 1905) and insert into respective holes.



UL Specifications

Part Number	Loop Type	Electrical Configuration	Gap Distance	
			In Steel	In Wood
1076C	Open or Closed	SPDT	Up to 3/8"	7/8"
1076CW	Open or Closed	SPDT	Up to 3/4"	2"
1076CD (no Canadian listing)	Open or Closed	DPDT	Up to 3/8"	5/8"
1077CW (no Canadian listing)	Open	N/C	Up to 3/4"	2"
1078C	Closed	N/O	Up to 3/8"	7/8"
1078CW	Closed	N/O	Up to 3/4"	2"

** FORM A (1078, 1078W) Voltage: 100V AC/DC max Current: 0.5A max Power: 7.5W max	FORM B (1077CW) Voltage: 30V AC/DC max Current: 0.25A max Power: 3.0W max	FORM C (1076C, 1076CW) Voltage: 30V AC/DC max Current: 0.25A max Power: 3.0W max
--	--	---

* Gap specifications are nominal and may vary $\pm 20\%$. Gap specifications are for switch to make. Break distance is approximately 1.1 to 1.5 times make.

** European Union Specifications: 48V AC/DC Max., 0.5 Amp

WARNING: Each electrical rating is an individual maximum and cannot be exceeded!

C-UL Specifications

All Contacts: 30V DC, 50 mA max

Gap Specifications:
See UL Gap Specifications



GE Interlogix

www.GE-Interlogix.com

12345 SW Leveton Drive
Tualatin, OR 97062
Phone: 503-692-4052
USA & Canada: 800-547-2556
Technical Service: 800-648-7424
Faxback: 800-483-2495

2266 Second Street North
North St. Paul, MN 55109
Phone: 651-777-2690
USA & Canada: 800-777-5484
Technical Service: 800-777-2624

1040682 Rev A 01/03

Made in Taiwan