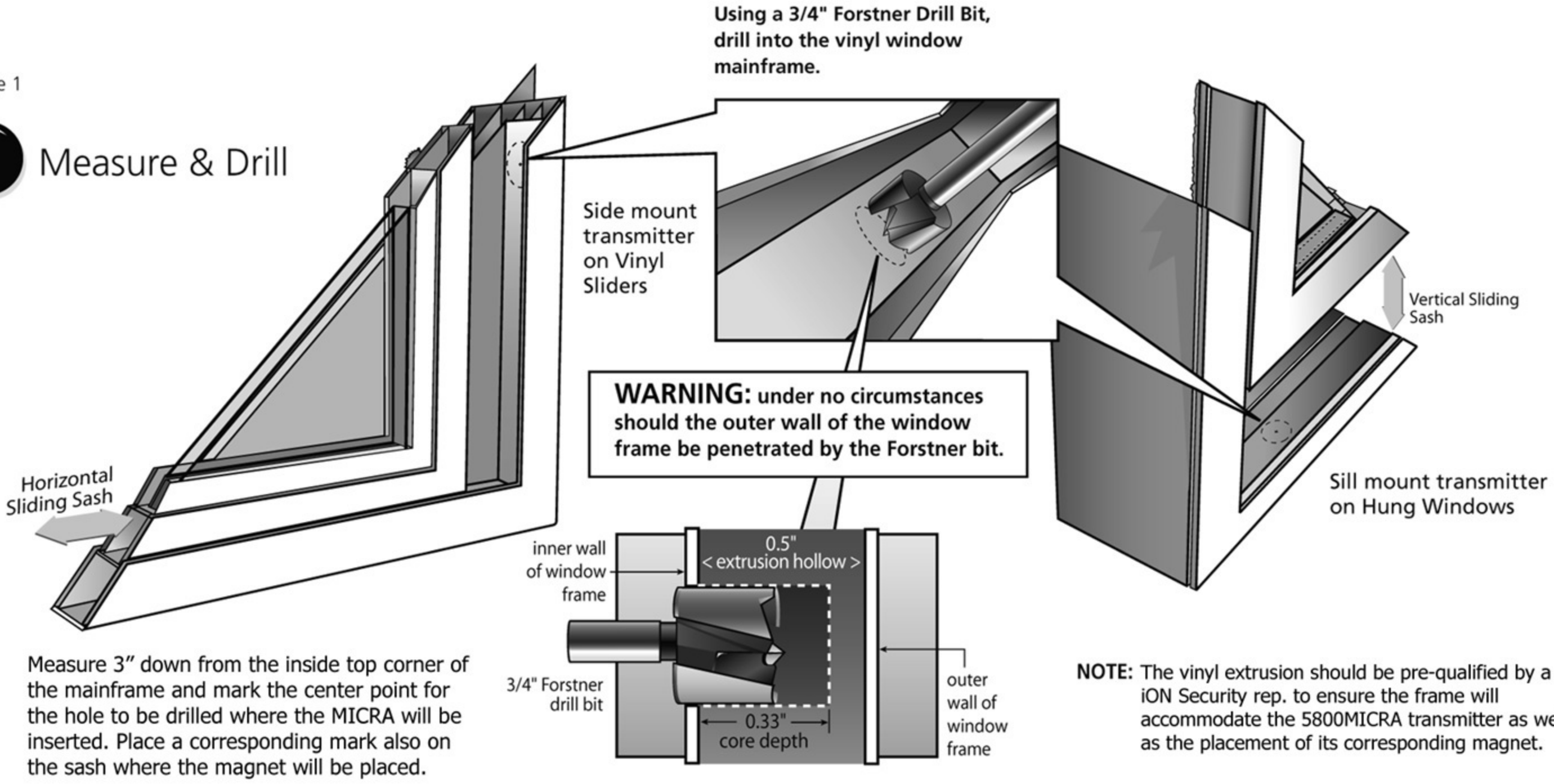


WARNING:

Under no circumstances should the outer wall of the window frame be penetrated by the Forstner bit.

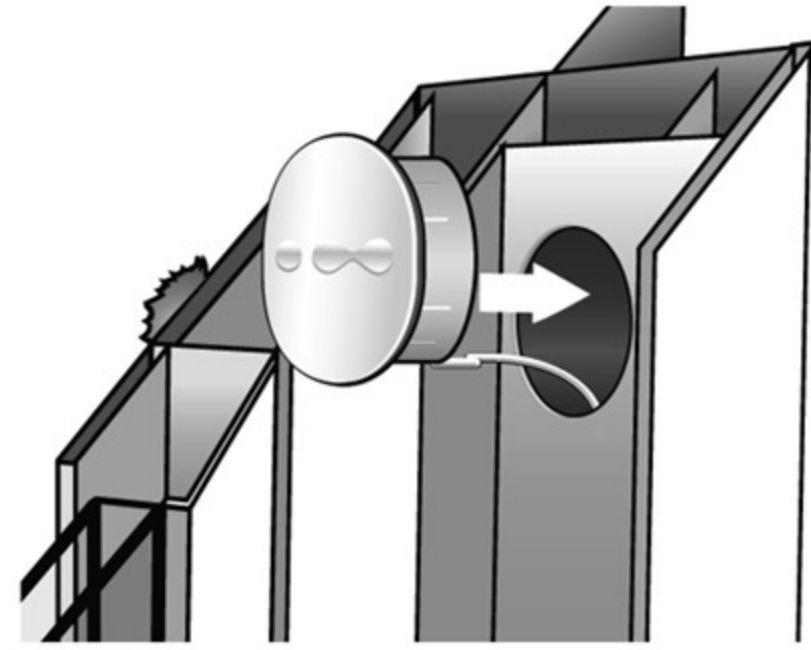
Figure 1

1 Measure & Drill



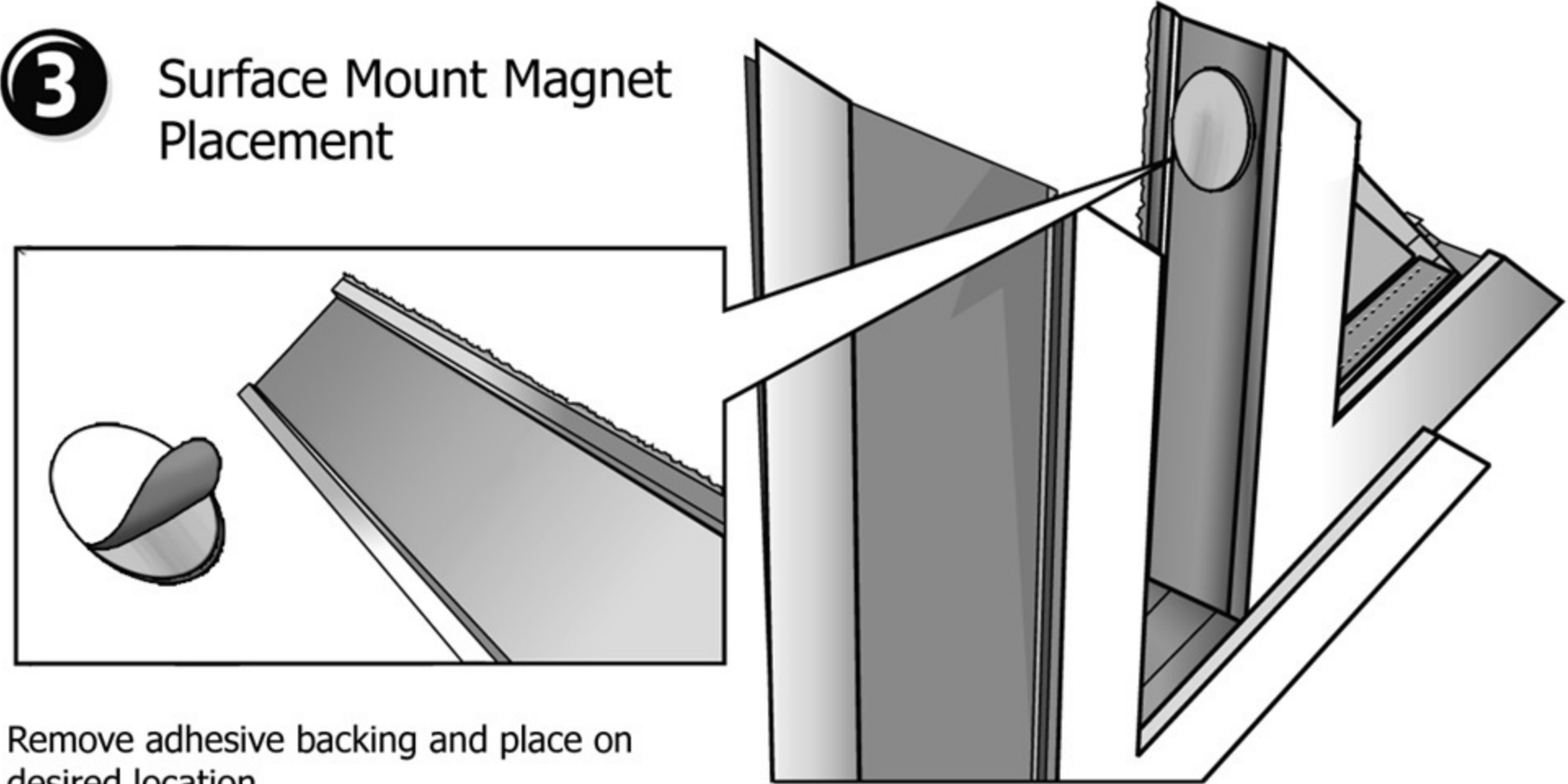
Measure 3" down from the inside top corner of the mainframe and mark the center point for the hole to be drilled where the MICRA will be inserted. Place a corresponding mark also on the sash where the magnet will be placed.

2 Place and Set

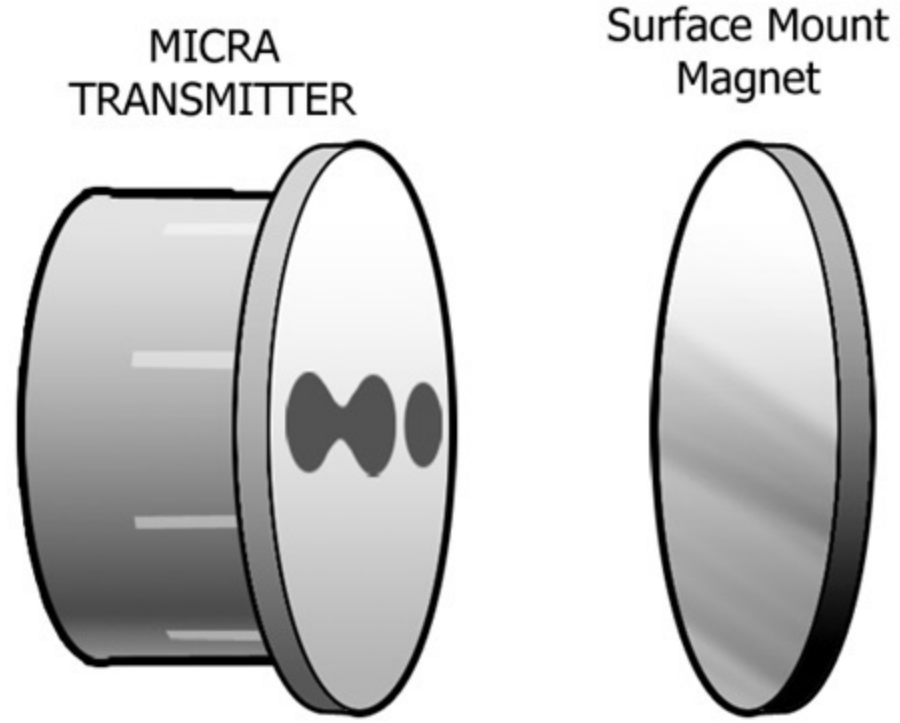


Insert the 5800MICRA's antenna into the extrusion hollow then press the transmitter body into the corded opening.

3 Surface Mount Magnet Placement



Remove adhesive backing and place on desired location.



NOTE: It is essential to the systems operation that the positioning of the MICRA transmitter point in the same direction as its corresponding magnet.